

Courtesy Of Satvir Nagpal Of Royal LePage METRO

\$759,000 - 315 42 Street, Edmonton

MLS® #E4452003

\$759,000

4 Bedroom, 3.00 Bathroom, 2,423 sqft
Single Family on 0.00 Acres

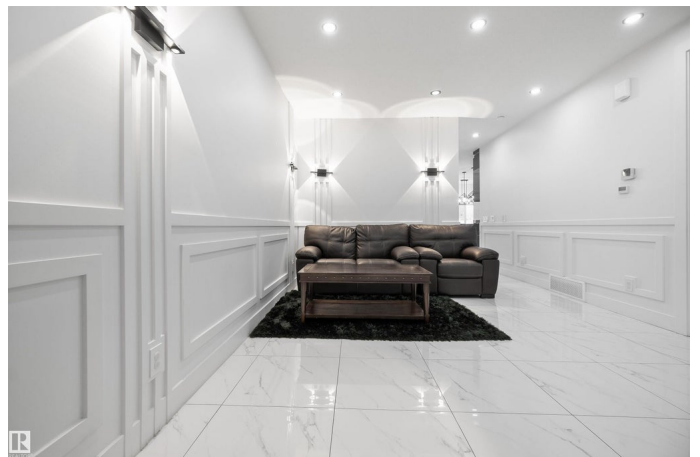
Charlesworth, Edmonton, AB

Fully Upgraded 2423 SQFT Built by SINGH BUILDERS which is a very RARE FIND. Welcome to this beautifully designed home with Luxury Main floor TILES, a SIDE ENTRANCE, TWO LIVING AREAS, one OPEN TO BELOW living room features a DROP CEILING, another Living area feature an ELECTRIC FIREPLACE and a CUSTOM FEATURE WALL. The modern kitchen is equipped with stainless steel appliances, a central island, EXTENDED KTCHEN and sleek finishes, while the SPICE KITCHEN offers additional prep space with a window for ventilation. The main floor bed and full bathroom complete this level. Upstairs, the bonus room features an INDENT CEILING with LED lighting and ANOTHER FIREPLACE. The primary bedroom also includes an LED-INTEND ceiling, walk-in closet, and a well-appointed 5-piece ensuite. Two more bedrooms share a 3-piece bathroom and the laundry is conveniently located on the upper level. Prime location close to parks, playgrounds, schools, and shopping routes. FULLY EQUIPPED with all the upgrades, you just name them.

Built in 2022

Essential Information

MLS® # E4452003



Price	\$759,000
Bedrooms	4
Bathrooms	3.00
Full Baths	3
Square Footage	2,423
Acres	0.00
Year Built	2022
Type	Single Family
Sub-Type	Detached Single Family
Style	2 Storey
Status	Active

Community Information

Address	315 42 Street
Area	Edmonton
Subdivision	Charlesworth
City	Edmonton
County	ALBERTA
Province	AB
Postal Code	T6X 3A2

Amenities

Amenities	Ceiling 9 ft., Deck, No Animal Home, No Smoking Home, See Remarks, 9 ft. Basement Ceiling
Parking	Double Garage Attached

Interior

Interior Features	ensuite bathroom
Appliances	Dishwasher-Built-In, Dryer, Garage Control, Garage Opener, Hood Fan, Refrigerator, Stove-Countertop Electric, Stove-Gas, Washer, Curtains and Blinds
Heating	Forced Air-1, Natural Gas
Fireplace	Yes
Fireplaces	Insert
Stories	2
Has Basement	Yes
Basement	Full, Unfinished

Exterior

Exterior	Wood, Vinyl
Exterior Features	Fenced, Landscaped, Playground Nearby, Public Transportation, Schools, Shopping Nearby
Roof	Asphalt Shingles
Construction	Wood, Vinyl
Foundation	Concrete Perimeter

Additional Information

Date Listed August 8th, 2025

Days on Market 68

Zoning Zone 53

DATA IS DEEMED RELIABLE BUT IS NOT GUARANTEED ACCURATE BY THE REALTORS® ASSOCIATION OF EDMONTON. COPYRIGHT 2025 BY THE REALTORS® ASSOCIATION OF EDMONTON. ALL RIGHTS RESERVED. Trademarks are owned or controlled by the Canadian Real Estate Association (CREA) and identify real estate professionals who are members of CREA (REALTOR®, REALTORS®) and/or the quality of services they provide (MLS®, Multiple Listing Service®)

Listing information last updated on October 15th, 2025 at 8:02pm MDT