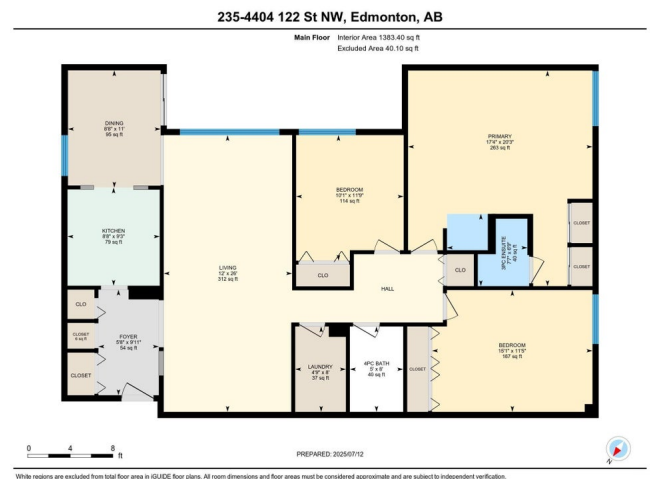


\$152,000 - 235 4404 122 Street, Edmonton

\$152,000

Aspen Gardens, Edmonton, AB

A photograph showing the entrance to Aspen Garden Estates. A brick pillar stands at the edge of a paved driveway, topped with a spherical light fixture. The pillar features a dark plaque with the text "Aspen Garden ESTATES" and the phone number "480-6122-67". Below this, smaller text lists amenities: "CONCRETE DRIVEWAY • PRIVATE GARAGE • STAINLESS STEEL KITCHEN APPLIANCES • HARDWOOD FLOORING • FULLY EQUIPPED BATHS • IN-UNIT LAUNDRY • GOLF CARTS AVAILABLE • CLOSE TO SHOPPING AND DINING". To the left of the pillar is a wooden fence partially obscured by dense green foliage and trees. In the background, a multi-story white apartment building with balconies is visible under a clear blue sky. A yellow curb borders the driveway in the foreground.



Essential Information

MLS® #	E4447485
Price	\$152,000
Bedrooms	3
Bathrooms	2.00
Full Baths	2
Square Footage	1,383
Acres	0.00
Year Built	1976

Type	Condo / Townhouse
Sub-Type	Lowrise Apartment
Style	Single Level Apartment
Status	Active

Community Information

Address	235 4404 122 Street
Area	Edmonton
Subdivision	Aspen Gardens
City	Edmonton
County	ALBERTA
Province	AB
Postal Code	T6J 4A9

Amenities

Amenities	Exercise Room, Intercom, Parking-Visitor, Party Room, Pool-Indoor, Recreation Room/Centre, Secured Parking, Security Door, Television Connection
Parking Spaces	1
Parking	Single Carport
Has Pool	Yes

Interior

Interior Features	ensuite bathroom
Appliances	Dishwasher-Built-In, Microwave Hood Fan, Refrigerator, Stacked Washer/Dryer, Stove-Electric, Window Coverings
Heating	Hot Water, Natural Gas
# of Stories	4
Stories	1
Has Basement	Yes
Basement	None, No Basement

Exterior

Exterior	Wood, Brick, Vinyl
Exterior Features	Fenced, Golf Nearby, Landscaped, Paved Lane, Picnic Area, Playground Nearby, Public Transportation, Schools, Shopping Nearby, Ski Hill Nearby
Roof	Asphalt Shingles
Construction	Wood, Brick, Vinyl
Foundation	Concrete Perimeter

Additional Information

Date Listed	July 12th, 2025
Days on Market	12
Zoning	Zone 16
Condo Fee	\$1,000

DATA IS DEEMED RELIABLE BUT IS NOT GUARANTEED ACCURATE BY THE REALTORS® ASSOCIATION OF EDMONTON. COPYRIGHT 2025 BY THE REALTORS® ASSOCIATION OF EDMONTON. ALL RIGHTS RESERVED.Trademarks are owned or controlled by the Canadian Real Estate Association (CREA) and identify real estate professionals who are members of CREA (REALTOR®, REALTORS®) and/or the quality of services they provide (MLS®, Multiple Listing Service®)

Listing information last updated on July 24th, 2025 at 1:32pm MDT