

## \$839,000 - 7248 May Road, Edmonton

MLS® #E4444485

**\$839,000**

4 Bedroom, 4.00 Bathroom, 2,331 sqft

Single Family on 0.00 Acres

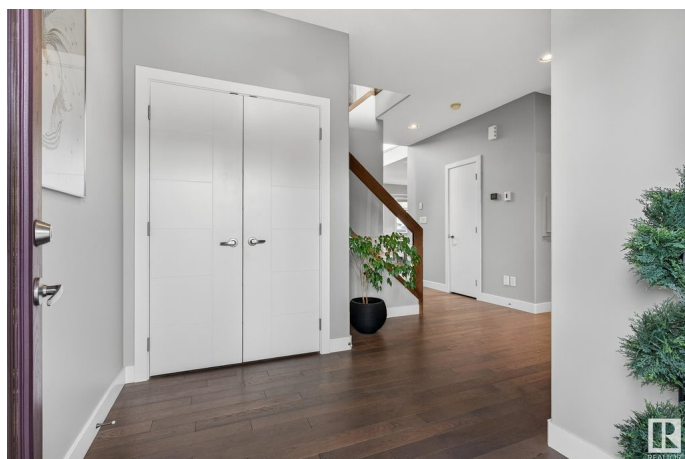
Magrath Heights, Edmonton, AB

**FORMER SHOWHOME ALERT!** This fully loaded **TRIPLE GARAGE** two-storey by Kimberley Homes offers exceptional upgrades and thoughtful design. The open-to-below floorplan, expansive windows, and soaring ceilings fill the space with natural light. Enjoy a chef's kitchen, grand living room with full-height fireplace, king-sized primary suite with spa-like ensuite, walk-in closet, and private den. Upstairs features a spacious bonus room and two bedrooms; the finished basement includes 9' ceilings, a huge rec room, fourth bedroom, full bath, and access to the oversized triple garage. Additional perks: A/C, tankless hot water, central vac, whole-home audio, ethernet, professional landscaping, and direct access to the neighbourhood's beautiful trails and ponds. Close to top schools, shops, Whitemud & Henday. Luxury, comfort, and nature all in one stunning package!

Built in 2015

### Essential Information

|            |           |
|------------|-----------|
| MLS® #     | E4444485  |
| Price      | \$839,000 |
| Bedrooms   | 4         |
| Bathrooms  | 4.00      |
| Full Baths | 4         |



|                |               |
|----------------|---------------|
| Square Footage | 2,331         |
| Acres          | 0.00          |
| Year Built     | 2015          |
| Type           | Single Family |
| Sub-Type       | Half Duplex   |
| Style          | 2 Storey      |
| Status         | Active        |

### Community Information

|             |                 |
|-------------|-----------------|
| Address     | 7248 May Road   |
| Area        | Edmonton        |
| Subdivision | Magrath Heights |
| City        | Edmonton        |
| County      | ALBERTA         |
| Province    | AB              |
| Postal Code | T6R 0T2         |

### Amenities

|           |                        |
|-----------|------------------------|
| Amenities | See Remarks            |
| Parking   | Triple Garage Attached |

### Interior

|                   |  |
|-------------------|--|
| Interior Features | ensuite bathroom   |
| Appliances        | Air Conditioning-Central, Dishwasher-Built-In, Dryer, Garage Control, Garage Opener, Refrigerator, Stove-Gas, Washer, Window Coverings |
| Heating           | Forced Air-1, Natural Gas  |
| Stories           | 3  |
| Has Basement      | Yes  |
| Basement          | Full, Finished   |

### Exterior

|                   |                    |
|-------------------|--------------------|
| Exterior          | Wood, Stone        |
| Exterior Features | See Remarks        |
| Roof              | Asphalt Shingles   |
| Construction      | Wood, Stone        |
| Foundation        | Concrete Perimeter |

### Additional Information

|             |                 |
|-------------|-----------------|
| Date Listed | June 26th, 2025 |
|-------------|-----------------|

|                |          |
|----------------|----------|
| Days on Market | 23       |
| Zoning         | Zone 14  |
| HOA Fees       | 225      |
| HOA Fees Freq. | Annually |

DATA IS DEEMED RELIABLE BUT IS NOT GUARANTEED ACCURATE BY THE REALTORS® ASSOCIATION OF EDMONTON. COPYRIGHT 2025 BY THE REALTORS® ASSOCIATION OF EDMONTON. ALL RIGHTS RESERVED. Trademarks are owned or controlled by the Canadian Real Estate Association (CREA) and identify real estate professionals who are members of CREA (REALTOR®, REALTORS®) and/or the quality of services they provide (MLS®, Multiple Listing Service®)

Listing information last updated on July 19th, 2025 at 6:17am MDT