

## \$380,000 - 9242 150 Street, Edmonton

MLS® #E4439567

**\$380,000**

3 Bedroom, 2.00 Bathroom, 970 sqft

Single Family on 0.00 Acres

Sherwood, Edmonton, AB

REDEVELOPMENT OPPORTUNITY in Sherwood! 50' x 148' lot - sub-dividable for 2 skinny lots, option for a suited duplex & garage suites, or beautiful lush treed lot for a future single family home. Prime location close to great schools, transit options & future LRT, Candy Cane Lane, and some of the city's best running & bike trails. Great value in a beautiful neighbourhood!

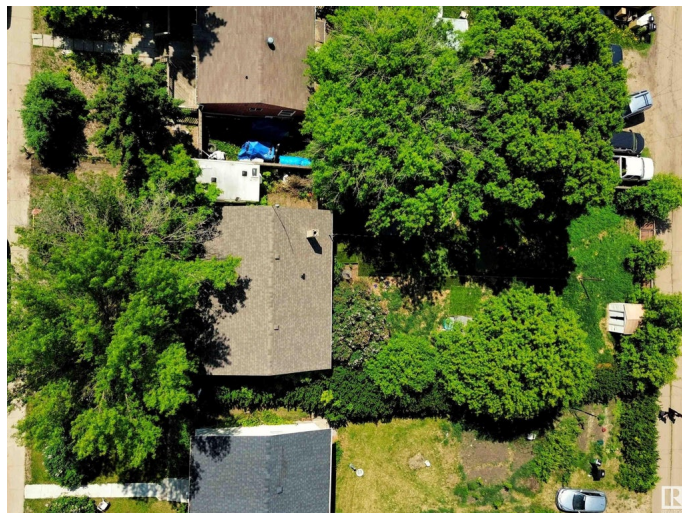
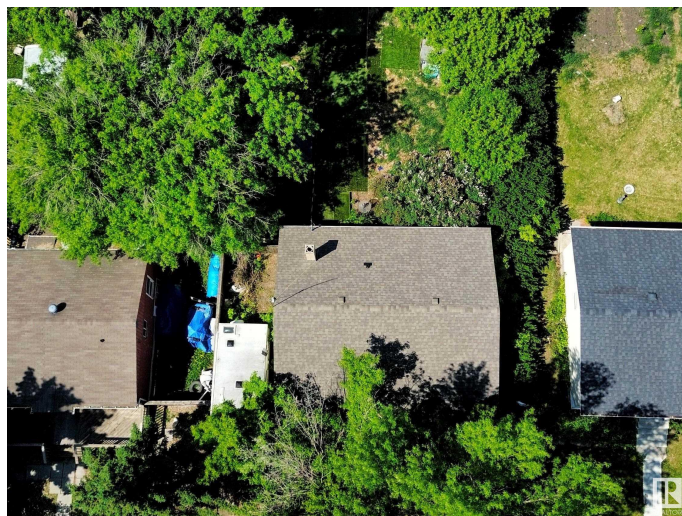
Built in 1952

### Essential Information

MLS® #	E4439567
Price	\$380,000
Bedrooms	3
Bathrooms	2.00
Full Baths	2
Square Footage	970
Acres	0.00
Year Built	1952
Type	Single Family
Sub-Type	Detached Single Family
Style	Bungalow
Status	Active

### Community Information

Address	9242 150 Street
Area	Edmonton



Subdivision	Sherwood
City	Edmonton
County	ALBERTA
Province	AB
Postal Code	T5R 1G3

### Amenities

Amenities	Off Street Parking
Parking	No Garage

### Interior

Appliances	Dryer, Hood Fan, Refrigerator, Stove-Electric, Washer
Heating	Forced Air-1, Natural Gas
Stories	1
Has Basement	Yes
Basement	Full, Finished

### Exterior

Exterior	Wood, Stucco
Exterior Features	Back Lane, Flat Site, Landscaped, Schools
Roof	Asphalt Shingles
Construction	Wood, Stucco
Foundation	See Remarks

### Additional Information

Date Listed	May 30th, 2025
Days on Market	6
Zoning	Zone 22

DATA IS DEEMED RELIABLE BUT IS NOT GUARANTEED ACCURATE BY THE REALTORS® ASSOCIATION OF EDMONTON. COPYRIGHT 2025 BY THE REALTORS® ASSOCIATION OF EDMONTON. ALL RIGHTS RESERVED. Trademarks are owned or controlled by the Canadian Real Estate Association (CREA) and identify real estate professionals who are members of CREA (REALTOR®, REALTORS®) and/or the quality of services they provide (MLS®, Multiple Listing Service®)

Listing information last updated on June 4th, 2025 at 10:17pm MDT