

## \$159,900 - 412 15211 139 Street, Edmonton

MLS® #E4437382

**\$159,900**

1 Bedroom, 1.00 Bathroom, 829 sqft

Condo / Townhouse on 0.00 Acres

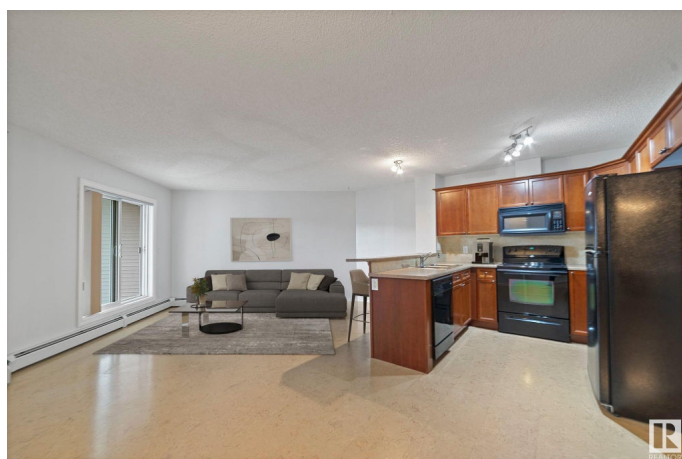
Cumberland, Edmonton, AB

Elegant 1 bed+ DEN, 1 bath TOP FLOOR condominium located in the prestigious Cumberland community. This meticulous unit offers an abundance of amenities, including an in-suite washer and dryer, a DEN perfect for a cozy office room, a spacious master bedroom with a walk-through closet and 4pce ensuite. The kitchen comes with ample storage and counter space. West facing unit provides loads of natural light and sun, and privacy is ensured with NO NEIGHBOURS to either side of the unit, or above. SEPARATE Assigned storage room right next to unit ensures ample space for your belongings, while underground parking provides convenience and security. Easy access to St. Albert & Henday and only 5 min walk to Hudson Lake. Embrace a lifestyle of luxury and comfort in this sophisticated condominium residence. Welcome home!

Built in 2005

### Essential Information

MLS® #	E4437382
Price	\$159,900
Bedrooms	1
Bathrooms	1.00
Full Baths	1
Square Footage	829
Acres	0.00



Year Built	2005
Type	Condo / Townhouse
Sub-Type	Lowrise Apartment
Style	Single Level Apartment
Status	Active

### Community Information

Address	412 15211 139 Street
Area	Edmonton
Subdivision	Cumberland
City	Edmonton
County	ALBERTA
Province	AB
Postal Code	T6V 0A1

### Amenities

Amenities	Exercise Room, Parking-Visitor
Parking	Underground

### Interior

Appliances	Dishwasher-Built-In, Dryer, Oven-Microwave, Refrigerator, Washer, Window Coverings
Heating	Hot Water, Natural Gas
# of Stories	4
Stories	1
Has Basement	Yes
Basement	None, No Basement

### Exterior

Exterior	Wood, Brick, Vinyl
Exterior Features	Low Maintenance Landscape, Playground Nearby, Public Transportation, Schools, Shopping Nearby
Roof	Asphalt Shingles
Construction	Wood, Brick, Vinyl
Foundation	Concrete Perimeter

### School Information

Elementary	Hilwie Hamdon, St. Angela
Middle	Sir John Thompson

High

Ross Shepard, O'Leary

Additional Information

Date Listed

May 20th, 2025

Days on Market

1

Zoning

Zone 27

Condo Fee

\$506

DATA IS DEEMED RELIABLE BUT IS NOT GUARANTEED ACCURATE BY THE REALTORS® ASSOCIATION OF EDMONTON. COPYRIGHT 2025 BY THE REALTORS® ASSOCIATION OF EDMONTON. ALL RIGHTS RESERVED.Trademarks are owned or controlled by the Canadian Real Estate Association (CREA) and identify real estate professionals who are members of CREA (REALTOR®, REALTORS®) and/or the quality of services they provide (MLS®, Multiple Listing Service®)

Listing information last updated on May 21st, 2025 at 10:17am MDT