

## **\$699,000 - 14011 101a Avenue, Edmonton**

MLS® #E4429422

**\$699,000**

4 Bedroom, 2.00 Bathroom, 1,245 sqft

Single Family on 0.00 Acres

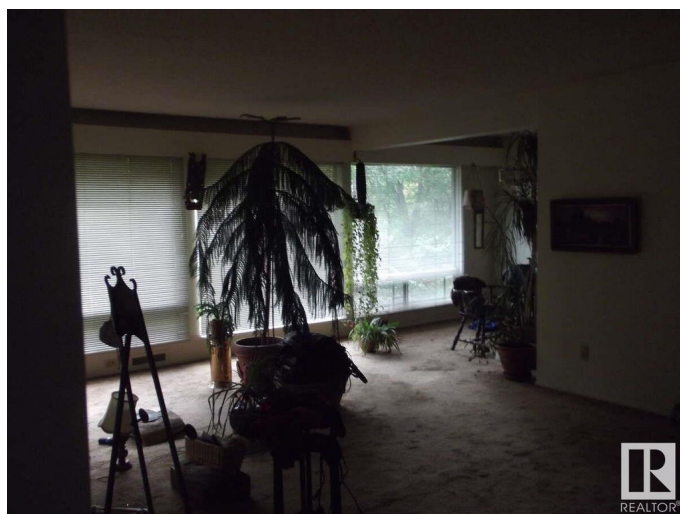
Glenora, Edmonton, AB

For more information, please click on "View Listing on Realtor Website". In the Heart of Glenora, One of Edmonton's Premier Neighbourhoods, yet not too close to Downtown. Within a Block of Dental Clinic, Pharmacy, Bank, Restaurants, other Amenities within walking distance. House has Timberline Shingle Roof (approx. 10yrs), High Efficiency Lenox Furnace (2013) and an Inspection will show that the Foundation and Framing will accommodate a complete Renovation. Selling Feature: 72' South Side of Ave Lot in Glenora, Block from 142 St, with shortcut to Stony Plain Rd & 102 Ave to Downtown, Bypassing 142 St & Stony Plain Rd. Intersection, or two blocks from new LRT Terminal. Immediate Occupancy. Starter Home in Glenora, Complete Renovation or Two Large 36' Infill Lots (verify with local jurisdiction). The Property is perfect as an Investment Property or a Starter Home in the Glenora Area.

Built in 1951

### **Essential Information**

MLS® #	E4429422
Price	\$699,000
Bedrooms	4
Bathrooms	2.00
Full Baths	2



Square Footage	1,245
Acres	0.00
Year Built	1951
Type	Single Family
Sub-Type	Detached Single Family
Style	Bungalow
Status	Active

### Community Information

Address	14011 101a Avenue
Area	Edmonton
Subdivision	Glenora
City	Edmonton
County	ALBERTA
Province	AB
Postal Code	T5N 0L4

### Amenities

Amenities	Carbon Monoxide Detectors, Hot Water Natural Gas, Insulation-Upgraded, No Smoking Home, Parking-Extra, Parking-Visitor, Vinyl Windows
Parking Spaces	4
Parking	Single Carport, Single Garage Attached, Single Garage Detached

### Interior

Appliances	Dishwasher-Built-In, Hood Fan, Refrigerator, Stove-Gas, Washer
Heating	Forced Air-1, Natural Gas
Stories	1
Has Basement	Yes
Basement	Full, Partially Finished

### Exterior

Exterior	Wood, Brick, Vinyl
Exterior Features	Back Lane, Public Transportation, Schools
Roof	Asphalt Shingles
Construction	Wood, Brick, Vinyl
Foundation	Concrete Perimeter

### Additional Information

Date Listed April 6th, 2025

Days on Market 11

Zoning Zone 11

DATA IS DEEMED RELIABLE BUT IS NOT GUARANTEED ACCURATE BY THE REALTORS® ASSOCIATION OF EDMONTON. COPYRIGHT 2025 BY THE REALTORS® ASSOCIATION OF EDMONTON. ALL RIGHTS RESERVED. Trademarks are owned or controlled by the Canadian Real Estate Association (CREA) and identify real estate professionals who are members of CREA (REALTOR®, REALTORS®) and/or the quality of services they provide (MLS®, Multiple Listing Service®)

Listing information last updated on April 17th, 2025 at 5:32am MDT