

# \$220,000 - 116 11615 Ellerslie Road, Edmonton

MLS® #E4427117

**\$220,000**

2 Bedroom, 2.00 Bathroom, 912 sqft  
Condo / Townhouse on 0.00 Acres

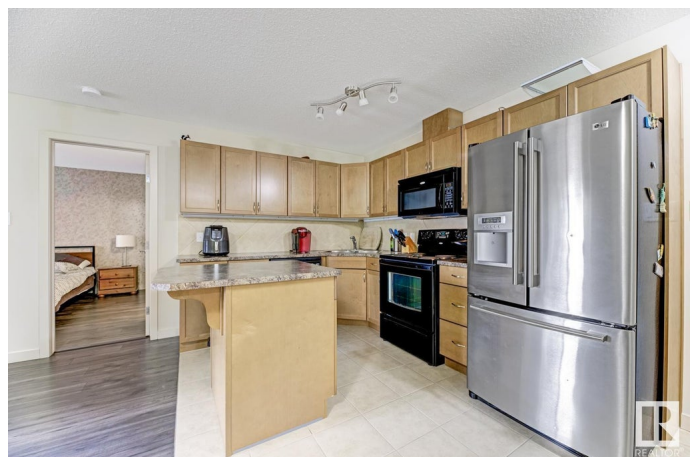
Rutherford (Edmonton), Edmonton, AB

Stunning 2-Bedroom Condo in Sought-After Rutherford Gate! Welcome to Rutherford Gate, a highly desirable complex offering premium amenities, including an onsite fitness center, social room, rentable guest suite, and heated underground parking with a storage cage. With shopping and transit right at your doorstep, convenience is unmatched! This SHOWSUITE-worthy 2-bedroom, 2-bathroom condo showcases pride of ownership throughout. Designed with an upgraded open-concept layout, the unit features: -Two walk-in closets for ample storage -Elegant maple cabinetry and a large island kitchen with stainless steel fridge -Ceramic tile and laminate flooring for a modern, low-maintenance finish -A spacious outdoor patio with a gas hookup, perfect for summer BBQs Donâ€™t miss this incredible opportunity to own in one of the best locations in Rutherford.

Built in 2007

## Essential Information

|            |           |
|------------|-----------|
| MLS® #     | E4427117  |
| Price      | \$220,000 |
| Bedrooms   | 2         |
| Bathrooms  | 2.00      |
| Full Baths | 2         |



|                |                        |
|----------------|------------------------|
| Square Footage | 912                    |
| Acres          | 0.00                   |
| Year Built     | 2007                   |
| Type           | Condo / Townhouse      |
| Sub-Type       | Lowrise Apartment      |
| Style          | Single Level Apartment |
| Status         | Active                 |

### Community Information

|             |                          |
|-------------|--------------------------|
| Address     | 116 11615 Ellerslie Road |
| Area        | Edmonton                 |
| Subdivision | Rutherford (Edmonton)    |
| City        | Edmonton                 |
| County      | ALBERTA                  |
| Province    | AB                       |
| Postal Code | T6W 0J3                  |

### Amenities

|           |   |
|-----------|---|
| Amenities | Exercise Room, Guest Suite, Parking-Visitor, Patio, Storage-Locker Room, Natural Gas BBQ Hookup |
| Parking   | Heated, Underground   |

### Interior

|                   |  |
|-------------------|--|
| Interior Features | ensuite bathroom   |
| Appliances        | Dishwasher-Built-In, Dryer, Microwave Hood Fan, Refrigerator, Stove-Electric, Washer |
| Heating           | Baseboard, Natural Gas   |
| # of Stories      | 4  |
| Stories           | 1  |
| Has Basement      | Yes  |
| Basement          | None, No Basement  |

### Exterior

|                   |   |
|-------------------|---|
| Exterior          | Wood, Stone, Vinyl  |
| Exterior Features | Playground Nearby, Public Transportation, Schools, Shopping Nearby, See Remarks |
| Roof              | Asphalt Shingles  |
| Construction      | Wood, Stone, Vinyl  |
| Foundation        | Concrete Perimeter  |

## Additional Information

|                |                  |
|----------------|------------------|
| Date Listed    | March 23rd, 2025 |
| Days on Market | 16               |
| Zoning         | Zone 55          |
| Condo Fee      | \$584            |

DATA IS DEEMED RELIABLE BUT IS NOT GUARANTEED ACCURATE BY THE REALTORS® ASSOCIATION OF EDMONTON. COPYRIGHT 2025 BY THE REALTORS® ASSOCIATION OF EDMONTON. ALL RIGHTS RESERVED. Trademarks are owned or controlled by the Canadian Real Estate Association (CREA) and identify real estate professionals who are members of CREA (REALTOR®, REALTORS®) and/or the quality of services they provide (MLS®, Multiple Listing Service®)

Listing information last updated on April 8th, 2025 at 2:47am MDT