

\$258,000 - 425 11603 Ellerslie Road, Edmonton

MLS® #E4425632

\$258,000

2 Bedroom, 2.00 Bathroom, 1,012 sqft
Condo / Townhouse on 0.00 Acres

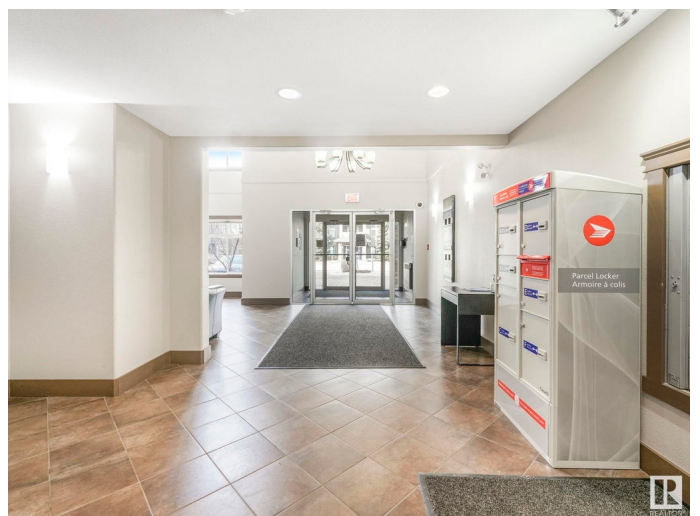
Rutherford (Edmonton), Edmonton, AB

Immaculate 2-Bedroom Condo in Rutherford
â€” Top Floor, Move-In Ready! Discover this bright and spacious 1,010 sq. ft. TOP FLOOR unit in the heart of Rutherford! Meticulously maintained, this open-concept layout features a generous living area, a stylish kitchen with an island, and a dedicated dining space. The primary bedroom boasts a walk-through closet leading to a 3-piece ensuite, while the spacious second bedroom is conveniently located next to a 4-piece bath. Enjoy the added bonus of a covered balcony facing sunny south exposureâ€”perfect for relaxing! Residents have access to fantastic amenities, including a games room with a kitchenette, a fully equipped gym, and easy access to major routes such as the Henday, Calgary Trail, and Gateway Blvd. Includes one underground parking stall and one surface stall. Move-in readyâ€”donâ€™t miss out!

Built in 2007

Essential Information

MLS® #	E4425632
Price	\$258,000
Bedrooms	2
Bathrooms	2.00
Full Baths	2
Square Footage	1,012



Acres	0.00
Year Built	2007
Type	Condo / Townhouse
Sub-Type	Lowrise Apartment
Style	Single Level Apartment
Status	Active

Community Information

Address	425 11603 Ellerslie Road
Area	Edmonton
Subdivision	Rutherford (Edmonton)
City	Edmonton
County	ALBERTA
Province	AB
Postal Code	T6W 0J3

Amenities

Amenities	Exercise Room, Guest Suite, Parking-Visitor, Social Rooms, Storage Cage
Parking Spaces	2
Parking	Stall, Underground

Interior

Interior Features	ensuite bathroom
Appliances	Dishwasher-Built-In, Dryer, Microwave Hood Fan, Refrigerator, Stove-Electric, Washer, Window Coverings
Heating	Baseboard, Natural Gas
# of Stories	4
Stories	1
Has Basement	Yes
Basement	None, No Basement

Exterior

Exterior	Wood, Stone, Vinyl
Exterior Features	Golf Nearby, Public Transportation, Schools, Shopping Nearby
Roof	Asphalt Shingles
Construction	Wood, Stone, Vinyl
Foundation	Concrete Perimeter

Additional Information

Date Listed	March 13th, 2025
Days on Market	26
Zoning	Zone 55
Condo Fee	\$670

DATA IS DEEMED RELIABLE BUT IS NOT GUARANTEED ACCURATE BY THE REALTORS® ASSOCIATION OF EDMONTON. COPYRIGHT 2025 BY THE REALTORS® ASSOCIATION OF EDMONTON. ALL RIGHTS RESERVED. Trademarks are owned or controlled by the Canadian Real Estate Association (CREA) and identify real estate professionals who are members of CREA (REALTOR®, REALTORS®) and/or the quality of services they provide (MLS®, Multiple Listing Service®)

Listing information last updated on April 8th, 2025 at 1:17pm MDT